



TAKING  
**COOPERATION**  
FORWARD

📍 TRANS-BORDERS Final conference | 4 November 2020

💬 ***Better connecting peripheral and border regions in central Europe***

👤 Winfried Ritt, Interreg CENTRAL EUROPE JS, Vienna

# Interreg CE - Transport Projects (Priority 4)



## WHY IS COOPERATION CENTRAL FOR A MORE CONNECTED EUROPE?

Our funding helps to reduce the gap between less accessible regions and well-connected centres. Our transnational partnerships improve also connections of regions and cities to the European transport networks, strengthen the multimodal, environmentally-friendly passenger and freight transport.

[www.interreg-central.eu/transport](http://www.interreg-central.eu/transport)



**16**  
FUNDED  
PROJECTS

**168**  
INSTITUTIONS  
INVOLVED

**9**  
COUNTRIES




**28**  
MILLION ERDF  
FUNDING

2014 → 2015 → 2016 → 2017 → 2018 → 2019 → 2020

## WHAT WE ACHIEVE




**PILOTS**  
Peripheral Access brought smart and innovative multimodal mobility systems from the urban areas in Graz, Austria to the periphery in the regions.  
[interreg-central.eu/peripheralaccess](http://interreg-central.eu/peripheralaccess)



**STRATEGIES**  
RUMOBIL has developed strategy for enhanced public transport in rural areas and better access to TEN-T networks.  
[interreg-central.eu/rumobil](http://interreg-central.eu/rumobil)



**TOOLS**  
ChemMultimodal has developed toolbox facilitating the shift to multimodal transport of chemical goods.  
[interreg-central.eu/chemmultimodal](http://interreg-central.eu/chemmultimodal)



**TRAININGS**  
CONNECT2CE project trained key stakeholders involved in public transport planning on improved cross-border mobility.  
[interreg-central.eu/connect2ce](http://interreg-central.eu/connect2ce)




PUBLISHED IN JANUARY 2020

# REGIONAL TRANSPORT SYSTEMS and TEN-T links: TOPICS & PROJECTS



Transport links within and across border regions

**CONNECT2CE | TRANS-BORDERS**

Integrated passenger transport in peripheral regions

**Peripheral Access | RUMOBIL  
SMACKER | REGIAMOBIL**



Smart regional mobility and intelligent transport systems

**SHAREPLACE**



Transport management around secondary nodes

**SubNodes**

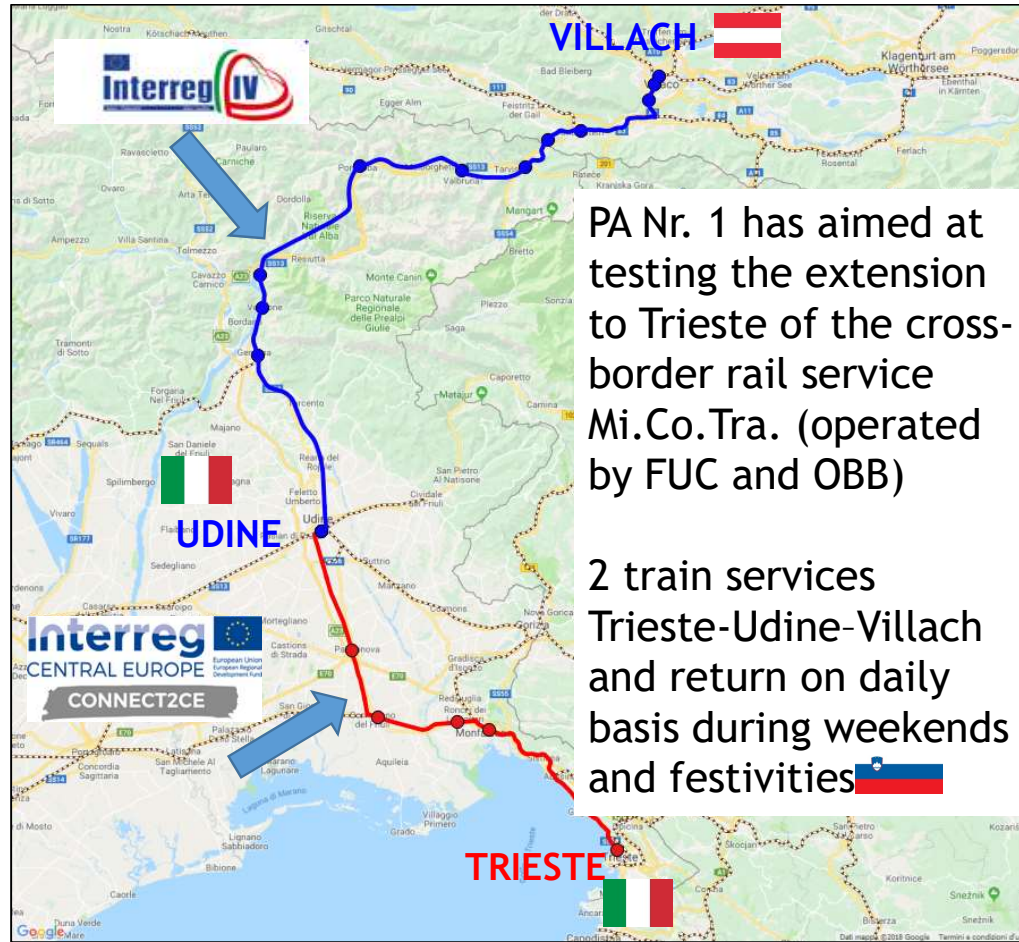
Mobility services for young people in rural areas

**YOUMOBIL**






# PILOT ACTION extended cross border railway IT-AT “CONNECT2CE”:



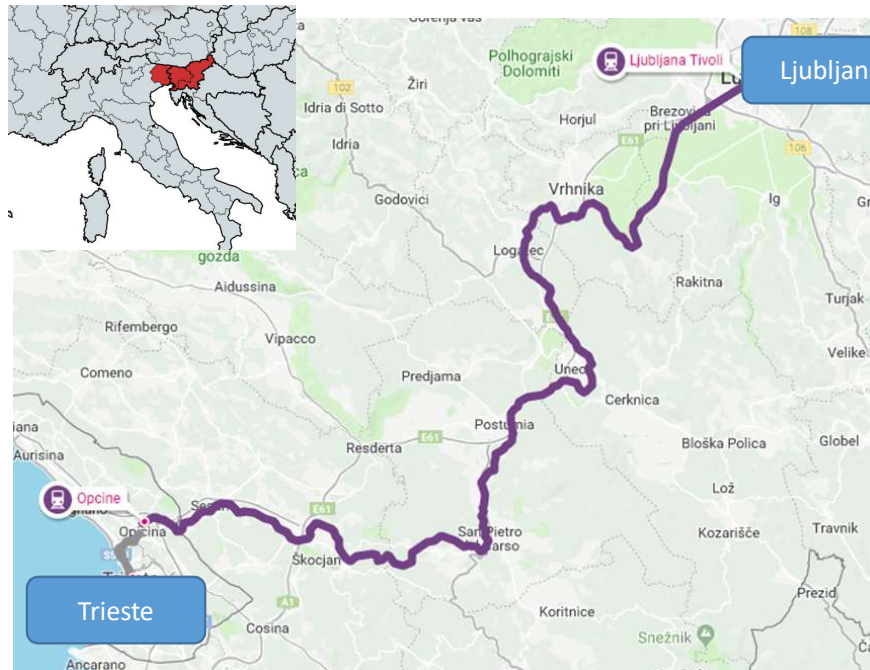
PA Nr. 1 has aimed at testing the extension to Trieste of the cross-border rail service Mi.Co.Tra. (operated by FUC and OBB)

2 train services  
Trieste-Udine-Villach  
and return on daily basis during weekends and festivities 



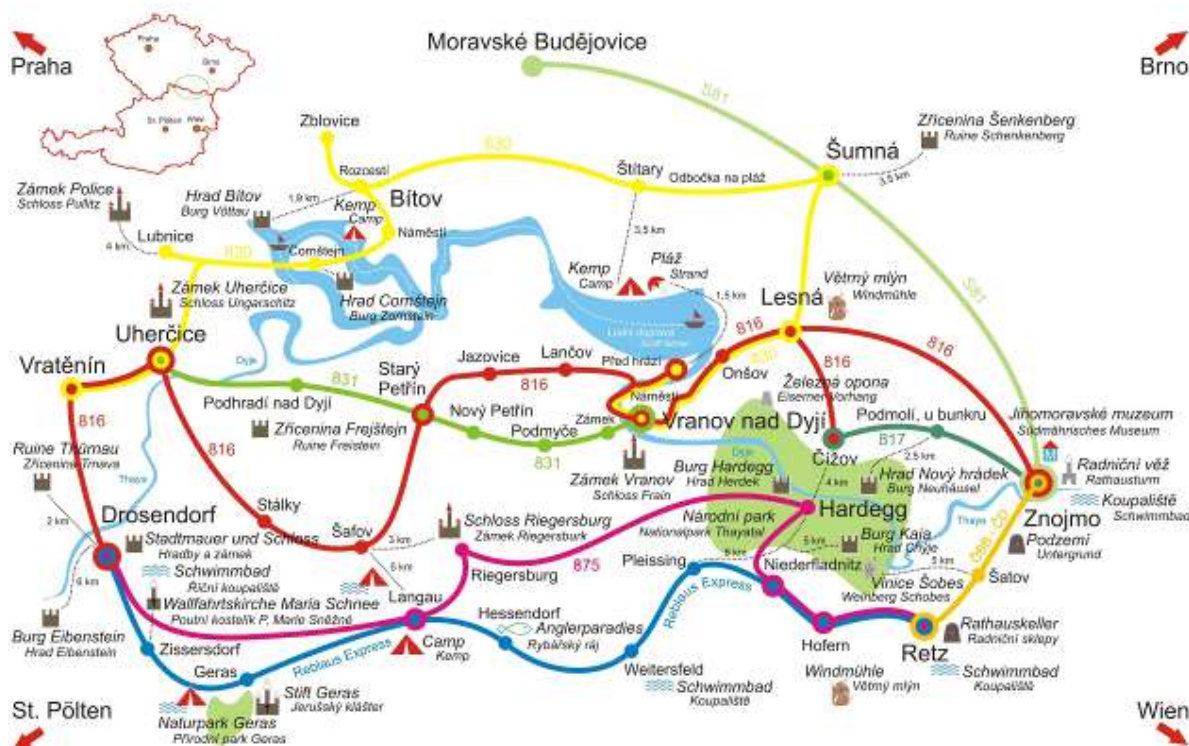
# PILOT ACTION integrated ticket IT-SI “CONNECT2CE”

Solving an existing CB missing link by combining the bus service (Italy) and the train service (Slovenia) into a single integrated and multimodal ticket to connect Trieste (IT) with Ljubljana (SI)



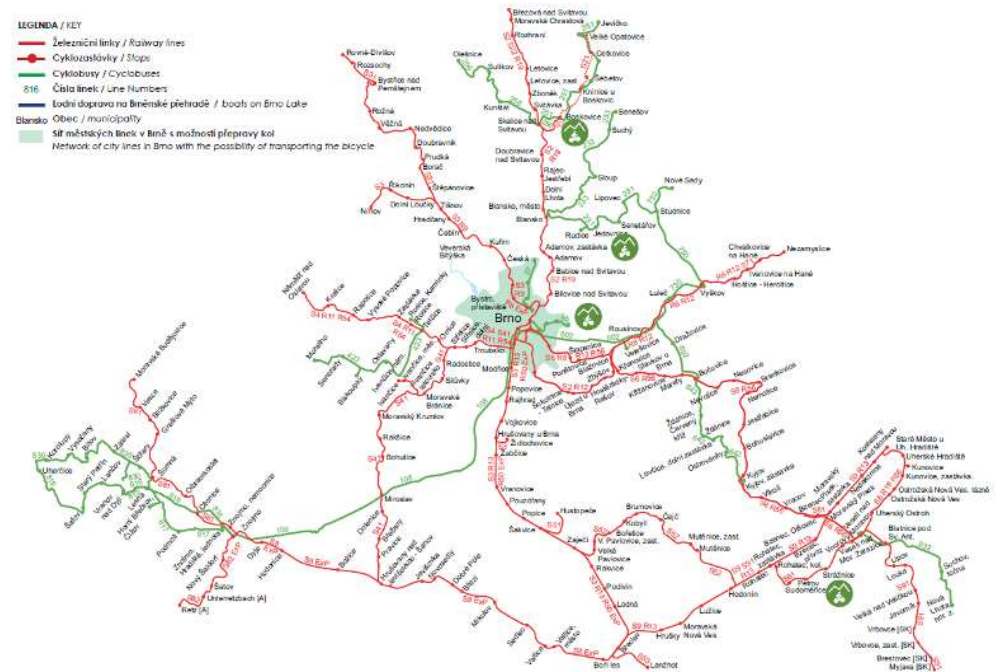


# PILOT ACTIONS demand responsive cross border bus „PHERIPHERAL ACCESS“:



816		Znojmo - Vranov nad Dyjí - Lančov - Vratěnin - Drosendorf													
Integrovaný dopravní systém Jihomoravského kraje															
Linka 729816: Přípravu zajišťuje: Znojemská dopravní společnost - PSOTA, s.r.o., Dobšická 3697/6, 669 02 Znojmo															
Informace a podněty: 5 4317															
PRACOVNÍ DNY															
Cílová spoje:	171	141	181	173	143	9	11	105	183	175	93	107			
Usek	Zóna	Zastávka	×	×A	×	E	×A	×P	×	×	×	×	×	×S	×E
800	Znojmo, aut.nádr. <sup>ob</sup>		4:55	5:25	7:35	9:02	11:02	12:02	13:02	13:32	14:02	14:32	14:55	15:02	
800	Znojmo, nám.Svobody lázně		4:59	5:29	7:39	9:07	11:07	12:07	13:07	13:37	14:07	14:37	15:00	15:07	
800	Znojmo, Pražská Police CR		5:00	5:30	7:40	9:08	11:08	12:08	13:08	13:38	14:08	14:38	15:01	15:08	
800	Znojmo, Pražská sídli		5:02	5:32	7:42	9:10	11:10	12:10	13:10	13:40	14:10	14:40	15:03	15:10	
800	Znojmo, Kasárna, rozc.0.6 (z)		5:05	5:35	7:45	9:13	11:13	12:13	13:13	13:43	14:13	14:43	15:06	15:13	
815	Citonice		5:07	5:37	7:47	9:16	11:16	12:16	13:16	13:46	14:16	14:46	15:09	15:16	
815	Miličovice, na státní		5:10	5:40	7:50	9:19	11:19	12:19	13:19	13:49	14:19	14:49	/	15:19	
815	Miličovice, ObÚ		/	/	/	/	/	/	/	/	/	/	/	15:13	/
825	Vracovice		5:12	5:42	7:52	9:22	11:22	12:22	13:22	13:52	14:22	14:52	15:17	15:22	
825	Vracovice, u kostela		/	/	/	/	/	/	/	/	/	/	/	15:20	/
825	Lesná, penzion <sup>ob</sup>		5:15	5:45	7:55	9:25	11:25	12:25	13:25	13:55	14:25	14:55	15:24	15:25	
	<sup>ob</sup> 816 Znojmo													15:28	
	<sup>ob</sup> 830 Dešná		5:16	5:46		9:26	11:26	12:26	13:26		14:26	14:56		15:26	
825	Lesná, lázeňka (z)		5:16	5:46	7:56	9:26	11:26	12:26	13:26	13:56	14:26	14:56		15:26	
837	Onšov, rozc.0.2		5:18	5:48	7:58	9:28	11:28	12:28	13:28	13:58	14:28	14:58		15:28	
837	Vranov nad Dyjí, nám.		5:22	5:52	8:02	9:32	11:32	12:32	13:32	14:02	14:32	15:02		15:32	
837	Vranov nad Dyjí, Zámecký hotel	plň.	5:24	5:54	8:04	9:34	11:34	12:34	13:34	14:04	14:34	15:04		15:34	
	<sup>ob</sup> 831 Uherčice							12:35		14:05				15:35	
837	Vranov nad Dyjí, Zámecký hotel	odš.	5:24	5:55	8:05	9:35	11:35			14:05				15:35	
847	Lančov, kaňčíka (z)		5:28	5:59	8:09	9:39	11:39			14:09				15:39	
847	Lančov, host. <sup>ob</sup>		5:31	6:02	8:12	9:42	11:42			14:12				15:42	
847	Štítary, host. <sup>ob</sup>		5:34	6:05	8:15	9:45	11:45			14:15				15:45	

# PILOT ACTION bike & bus in the border region „PHERIPHERAL ACCESS“





# PROJECT STORIES FROM INTERREG CENTRAL EUROPE

### INNOVATIVE SOLUTIONS

#### REDUCING TEXTILE WASTE IN COVID-19 TIMES



The COVID-19 pandemic has dramatically increased the use of disposable textile medical equipment. More and more single-use face masks, gowns, gloves, and disinfectant wipes. This creates pressure for municipalities to increase the amount of waste they can handle.

Some of them are trying to find innovative ways to deal with this waste. For example, in our **ENTeR** project, the project aims to provide the solution of reusing materials in the textile industry by recycling to produce and reuse in products in medical waste management.

In pilot actions, the partners studied the nature of medical waste and are now testing innovative ways for biologically decomposing waste, which means the most efficient recycling and reuse processes.

[Learn more about the ENTeR pilot actions](#)

### CIRCULAR ECONOMY

#### LET'S NOT WASTE THIS CRISIS



The current pandemic has not only severely impacted our economic systems, it is also affecting our society and economy. According to the World Bank, the economic damage is already evident and represents the largest recession since the 1930s. It is estimated that 26 million jobs could be lost worldwide as a result of COVID-19.

But as the saying goes, there is something good in everything bad, and this pandemic could be an opportunity for us to learn to value things more, to give them a second chance. Every year, we throw away goods worth 100 billion of Euros in Europe and we could do it better if they could be easily recycled or reused.

Partners in our project **SUBANCE** recognized that extending the product lifecycle is key to a circular economy in Europe and beyond. They have created a network of **Green the Blue** hubs, which offer reuse-oriented services in a modular way in urban areas. But why are they needed? Because each park contains different unique services that have responded to the need of urban water management: parks, blue water collection systems and shops, repair shops, repair and recycling workshops, reuse services, swapping platforms or educational ones.

It is a chance for innovation, which due to COVID-19 restrictions, allows people a lot of time at home with their families. The project provides a challenge for **Green the Blue** hubs to create a circular economy. The challenge is to find a way to involve and help to create jobs for people in the urban water management sector.

In Austria, they have a series of online workshops **Green the Blue** and at home with 100% of the time to reuse or repair a old cabinet, furniture, tables or bicycles.

### HEIGHT TRANSPORT

#### CHEMICAL GOODS TRANSPORT IS GOING GREEN



The European chemical industry transports more than 1.5 billion tonnes of chemical products annually. This requires the constant safety measures, because constant presence of accidents is a reality too great.

Shifting chemicals from road to safer means of transport can significantly decrease this risk and address the environment. Other however, business decisions this shift with increased costs and are not willing to make a change.

Our Chemicals model project proves that shifting chemicals goods from road to combined multimodal transport is indeed a model in the right direction in their pilot actions, the project has agreed to take more than 1000 tonnes of CO2, but more importantly they managed to change the attitude of more than 500 companies. Their managers now understand the safe and sustainable transport is crucial to the future of the European chemical industry. "There is no European Green Deal without a strong European industry of the future," says Miroslav Mareš, Director General of the European Chemical Industry Council.

In cooperation with companies across central Europe, the Chemicals model project partners identified 45 transport routes, which offer huge potential for shifting to multimodal solutions. Their research prepared ground for an improved safety and a better environmental performance to come.

[Learn more about how to provide multimodal solutions for chemical goods](#)

### Twitter feed

Regions face many challenges that do not stop at borders. It is important to central for taking transnational forward. Interreg helps them working together for better future.

Discover our 2019 initiative: #CooperationisCentral #InterregCentralEurope #CooperationisCentral

### MUSEUMS FOR ALL

#### CREATING A NEW STANDARD FOR ACCESSIBILITY



Museums and their exhibitions are there for everyone to enjoy, but too often reality is different. Many people with disabilities find it difficult to access museums and their exhibitions. The project created the **COPILOUT** and thanks to it will be easier to museums that are accessible to disabled people. To make the local museums more accessible to disabled people, the project partners have not only set a set of standards, but were carefully followed by the project partnership.

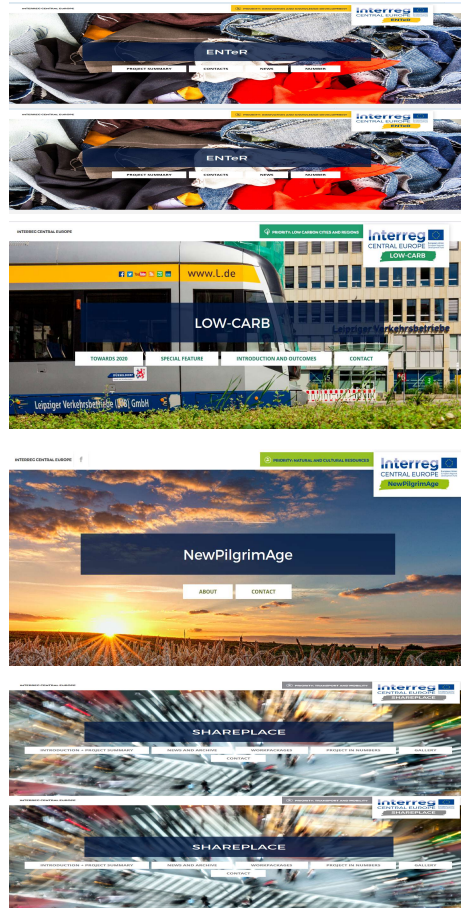
First activities were that many activities of the local and providing from the visitors of Slovakia, Croatia, increased the activities. The activity is our hands. Expanded activities and with an award for the best exhibition of the year in Croatia in 2018. Making archaeological concepts more accessible for people with disabilities has ensured constant

### BUSINESS INNOVATION

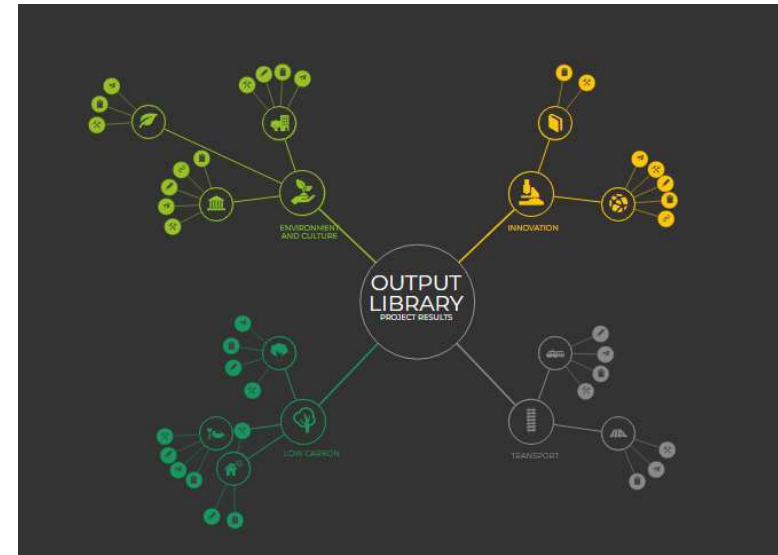
#### MATCHING SMALL BUSINESSES WITH RESEARCH



Innovation is not only means financing



The collage features several project websites and photos. At the top, there are screenshots of the **ENTeR** website, which focuses on reducing textile waste. Below that is the **LOW-CARB** website, which promotes low-carbon transport. In the center, there is a website for **NewPilgrimAge**, which aims to make museums more accessible. At the bottom, there are screenshots of the **SHAREPLACE** website, which focuses on sharing resources. The photos show people working together in a meeting, a sunset over a field, and a group of people standing together.



Find out more

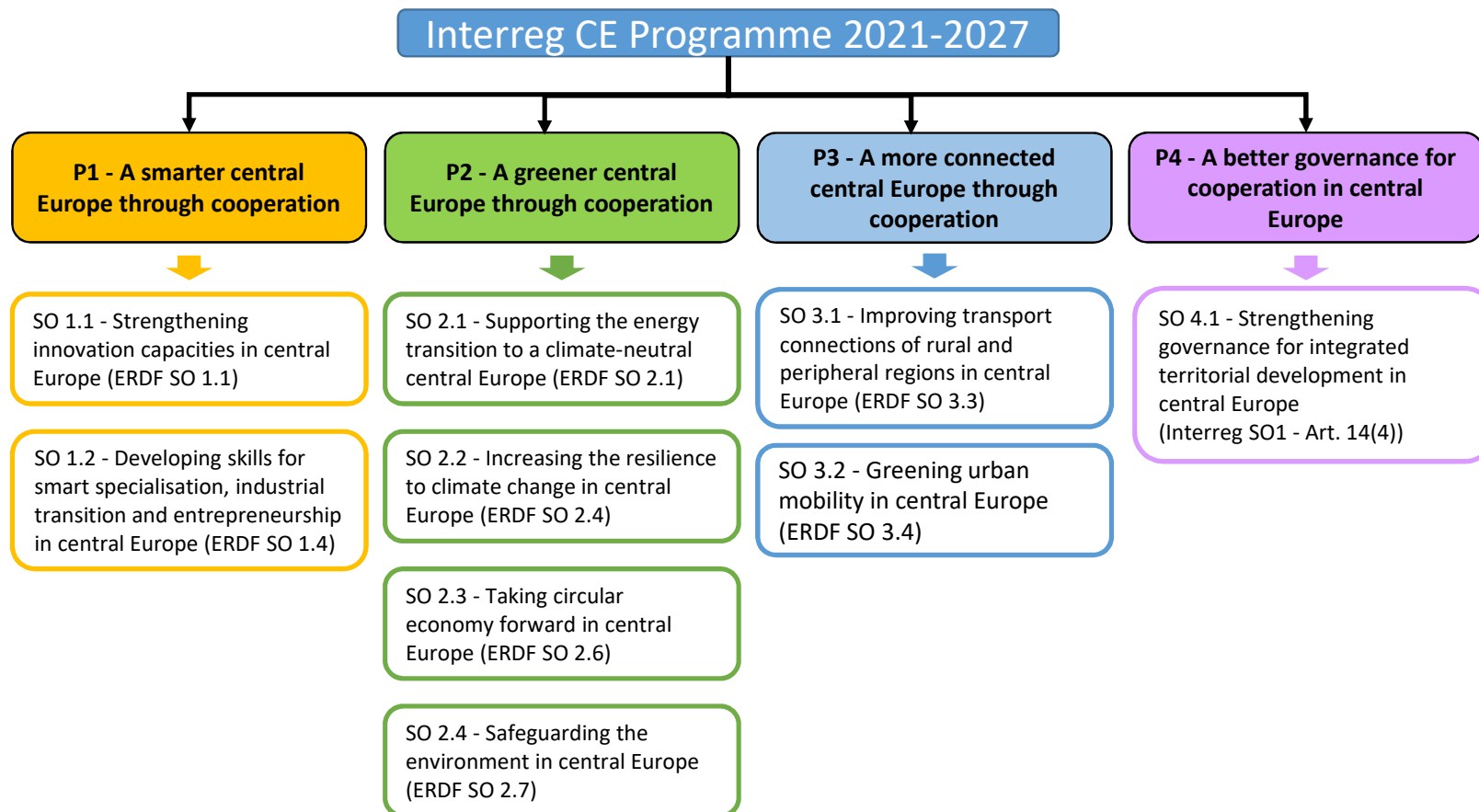
- [www.interreg-central.eu/cooperationiscentral](http://www.interreg-central.eu/cooperationiscentral)
- [www.interreg-central.eu/projects](http://www.interreg-central.eu/projects)
- [www.interreg-central.eu/outputs](http://www.interreg-central.eu/outputs)



# Shaping Interreg Central Europe 2021-27: an inclusive approach



# Shaping Interreg CE 2021-27: Priority Axes



# Shaping Interreg CE 2021-27: timeline





# Where to find information?

[www.interreg-central.eu/CE21-27](http://www.interreg-central.eu/CE21-27)

- General information, relevant documents and updates on the future Interreg CENTRAL EUROPE Programme 2021-2027
- Summary of the Draft Programme Strategy
- European Commission Orientation Paper for Interreg Central Europe 2021-27
- Analysis of the main territorial challenges, needs and transnational cooperation potentials in Central Europe

# CONTACTS



Winfried Ritt, Joint Secretariat  
Interreg CENTRAL EUROPE Programme



[www.interreg-central.eu](http://www.interreg-central.eu)



[ritt@interreg-central.eu](mailto:ritt@interreg-central.eu)



+43 1 8908088-2403

TAKING  
**COOPERATION**  
FORWARD